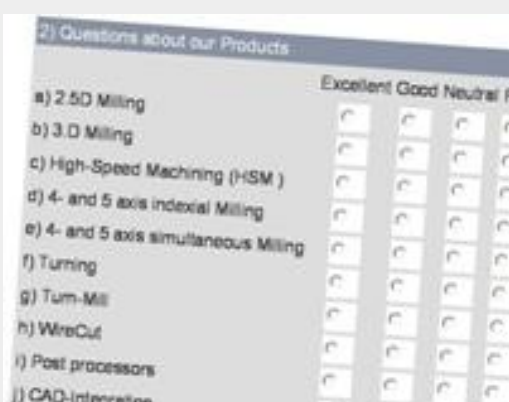


IN THIS ISSUE[Customer Survey 2007](#)[New Technology Training Center for SolidCAM in the Czech Republic](#)[SolidCAM supports new Turn-Mill machine](#)[Trade shows in Eastern Europe](#)**Customer Survey 2007**

2) Questions about our Products	Excellent	Good	Neutral	Poor
a) 2.5D Milling	<input type="radio"/>	<input type="radio"/>	<input type="radio"/>	<input type="radio"/>
b) 3.D Milling	<input type="radio"/>	<input type="radio"/>	<input type="radio"/>	<input type="radio"/>
c) High-Speed Machining (HSM)	<input type="radio"/>	<input type="radio"/>	<input type="radio"/>	<input type="radio"/>
d) 4- and 5 axis indexial Milling	<input type="radio"/>	<input type="radio"/>	<input type="radio"/>	<input type="radio"/>
e) 4- and 5 axis simultaneous Milling	<input type="radio"/>	<input type="radio"/>	<input type="radio"/>	<input type="radio"/>
f) Turning	<input type="radio"/>	<input type="radio"/>	<input type="radio"/>	<input type="radio"/>
g) Turn-Mill	<input type="radio"/>	<input type="radio"/>	<input type="radio"/>	<input type="radio"/>
h) WireCut	<input type="radio"/>	<input type="radio"/>	<input type="radio"/>	<input type="radio"/>
i) Post processors	<input type="radio"/>	<input type="radio"/>	<input type="radio"/>	<input type="radio"/>
j) CAD-Integration	<input type="radio"/>	<input type="radio"/>	<input type="radio"/>	<input type="radio"/>

It is very important for SolidCAM to learn, how satisfied our customers are with our products, services and organization. We therefore conduct a worldwide customer survey.

As the completion time for this survey is about 5 minutes, we ask all our customers to click on the link below to fill out the survey.

[SolidCAM Customer Survey 2007](#)**Upcoming events**

- [Technology 2007, Jun 18-21, Tel Aviv \(Israel\)](#)
- [DMS 2007, June 27-29, Tokyo \(Japan\)](#)

SolidCAM infos

- [Start SolidCAM feature tour](#)
- [More about customer successes](#)

When we founded the company more than 20 years ago, we had a close and personal contact to all our initial customers. Meanwhile the SolidCAM family has grown so rapidly, that we now have to support more than 12,000 installations worldwide. Although we try to meet as many customers as possible, it has become difficult to maintain the same level of personal contact. Nevertheless, the opinions and experiences of our customers are extremely important to help us to improve your productivity and efficiencies utilizing SolidCAM.

Dear reader, if you are a SolidCAM customer, we are inviting you to participate in the "SolidCAM customer survey 2007" to insure that we are providing you with the best possible software and services. Please click on the link:

[SolidCAM Customer Survey 2007](#)

and fill it out until **June, 30, 2007**. You will not only participate in the drawing for an "IPOD NANO", but mainly assist us to improve our products and services.

We thank you in advance for your active contribution and we hope you enjoy the Newsletter.

Emil Somekh
Managing Director
SolidCAM Ltd.

• New Technology Training Center for SolidCAM in the Czech Republic

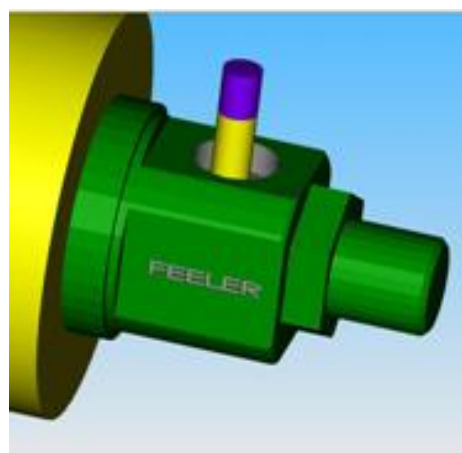
On June 5, the opening of the new [Technology Training Center](#) ("TTC") for SolidCAM in the Czech Republic has been celebrated. The TTC, a new division of SolidCAM's reseller SolidVision, is located at the facilities of the main technical school in Brno (Moravia). Representatives of the public authorities and the partner companies Hermle, Iscar, SolidWorks and SolidCAM attended the ceremony.



The main purpose of the TTC is to provide the industry with advanced technical support and services for the manufacturing of complex parts. This covers the complete range of milling applications with special focus on 5-axis indexial and simultaneous machining. The TTC is equipped with a Hermle C20 5-axis machine tool, Iscar cutter tools and the full range of the SolidCAM+ SolidWorks software. It will offer advanced training courses for operators and programmers, where the optimal combination of NC- strategies, machine tool and cutter tool parameters will be adressed for complex machining jobs.

[Read more about this innovative center...](#)**• SolidCAM supports new Turn-Mill machine**

One of SolidCAM's partners in Taiwan is the machine tool company *Feeler*. Established in 1985, Feeler has become a leading manufacturer of vertical and horizontal machining centers in Taiwan. Feeler also launched a series of CNC Lathe centers, which are highly regarded in the market.



In the Taipei International Machine Tool Show [TIMTOS](#) Feeler teamed up with SolidCAM's reseller *CAMRight* to present advanced manufacturing solutions. One focus was the newly announced Turn-Mill machine FTC-350 SLY with back spindle, which has been programmed with SolidCAM2007 R11. SolidCAM developed also a dedicated post processor for this machine.

[Learn more about Feeler...](#)**• Trade shows in Eastern Europe**

For the first time SolidCAM has been present at the [Belgrade Technical Fair](#) in Serbia, the biggest technical show in South-Eastern Europe. The show took place from May 8 to May 12 in Belgrade and attracted more than 35,000 visitors.



SolidCAM's new Serbian reseller [Solfans](#) demonstrated SolidCAM2007 integrated in SolidWorks2007.

[Premium Solutions](#), SolidCAM's reseller in Poland, exhibited at the PLASTPOL show in Kielce, the most important Polish trade show in mold and die makers (*see photo*). This year PLASTPOL hosted nearly 800 exhibitors from 29 countries. The booth of *Premium Solutions* in Hall E attracted an increasing number of visitors, who saw demonstrations of the new version SolidCAM2007 R11. The automation of the complete moldmaking process by the combined *SolidWorks+ SolidCAM* solution, including High-Speed machining and 5 axis simultaneous milling, grabbed the attention of the Polish tool and die makers.